

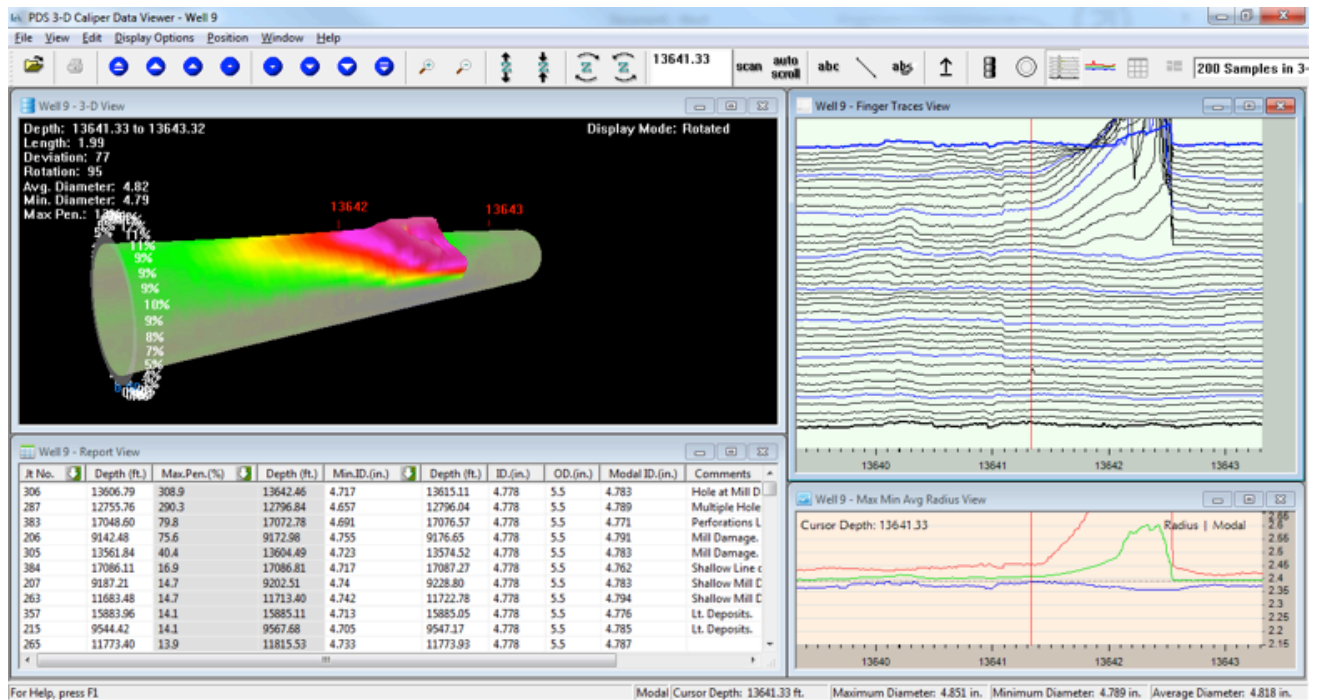
# Multi-Finger Caliper



A range of tool sizes with 24 or 40 fingers are available to suit different casing diameters. The tools may be run with extended length fingers to increase the measurement range. The MFC provides high resolution detail on the condition of downhole tubulars. Tools can be deployed on any standard conveyance method.

**PDS has extensive experience running memory calipers on conventional coil tubing.**

**PDS 3-D Viewer Software allows user to interact with data to study details of the caliper recording.**

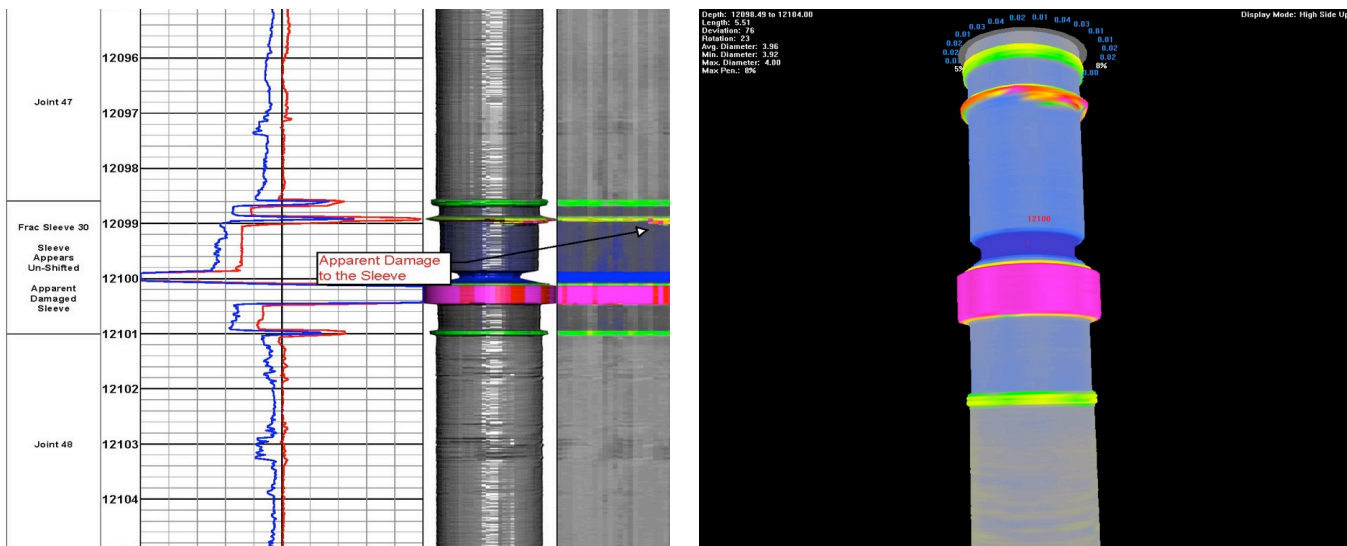


[www.memorylog.com](http://www.memorylog.com)  
281-595-7003  
[sales@memorylog.com](mailto:sales@memorylog.com)

## PDS MULTI-FINGER CALIPER SERVICES ADVANTAGES

- Run on any local third party conventional Slickline, E-Line, or Coiled Tubing
- Immediate On-Site Data Assessment and Well Condition Overview
- Real-Time or Memory Capabilities
- Comprehensive Final Analysis Results Processed and Emailed within 6 to 12 Hours
  - Expedited Processing can be Processed and Emailed within 2 to 5 hours
- Review Details in PDS 3-D Caliper Data Viewer
- Custom Reports to Enable Engineers to Optimize Well Work Strategies

### Example: Mechanical Damage to a Frac Sleeve



Product Name	24 finger	40 finger
Number of Fingers/Configuration	24 Standard or Extended	40 Standard or Extended
Temperature Rating	350° F	350° F
Pressure Rating	15,000 PSI	20,000 PSI
Tool Diameter	1 <sup>11</sup> / <sub>16</sub> inch	2 <sup>3</sup> / <sub>4</sub> inch
Measurement Range	Standard: 1.75–4.5 in. Extended: 1.75–7.0 in.	Standard: 2.75–7.0 in. Extended: 2.75–10.0 in.
Accuracy, Radial	±0.02in	Standard: ±0.02in Extended: ±0.025in
Resolution, Radial	Standard: 0.002in Extended: 0.003in	Standard: 0.0015in Extended: 0.0022in
Finger Contact Force	0.75–1.25 lbf (3.4–5.7 N)	0.75–1.25 lbf (3.4–5.7 N)
Logging Speed	50 ft/min recommended	50 ft/min recommended